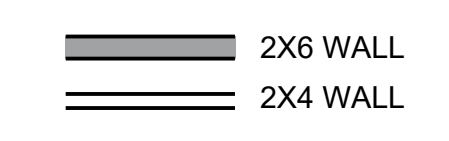


**KEYED NOTES**

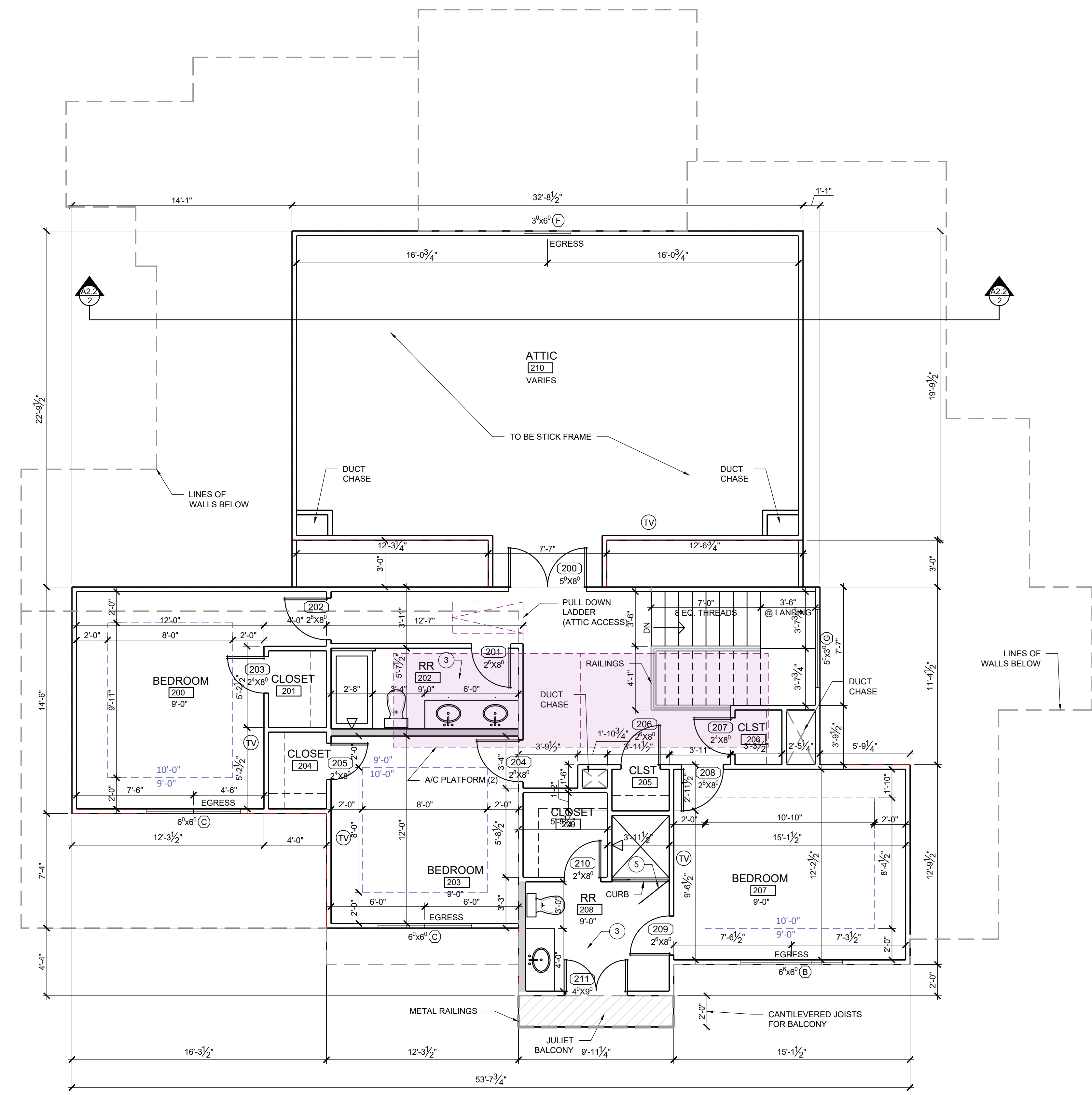
- 1 PROVIDE GAS
- 2 HOSE BIBB WITH ANTI SIPHON
- 3 NOTE: PROVIDE 2X6 BLOCKING @ 34" AFF AROUND PERIMETER OF THIS RESTROOM EXCEPT BEHIND THE SINK
- 4 PROVIDE POT FILLER
- 5 PROVIDE GLASS WALL WITH 30" SHOWER DOOR
- 6 MAXIMUM 1/2" CHANGE IN LEVEL

**WALL LEGEND**



**WUI NOTES**

THIS PROJECT WILL MEET THE REQUIREMENTS OF THE 2024 INTERNATIONAL WILDLAND-URBAN INTERFACE CODE AND WILL BE CONSTRUCTED TO THE **WUI PROXIMITY ZONE C** IGNITION-RESISTANT REQUIREMENTS OF THE CODE. PLEASE SEE NOTES ON SHEET W1.0 FOR CONSTRUCTION REQUIREMENTS AND MATERIAL TO BE USED.



paradisa



07/14/2025

date	issues & revisions	dsgr	aprv

description  
**2ND LEVEL FLOOR PLAN**

number  
**A2.1**

C:\Users\jadenet\OneDrive\Documents\Projects\2703 Oak Park Drive\2703 Oak Park Drive - 2nd Level Floor Plan.dwg  
 PLOTTED BY: jadenet  
 DATE: 07/14/2025 11:02:20 AM  
 PROJECT: 2703 OAK PARK DRIVE  
 SHEET: A2.1  
 REGISTERED ARCHITECT  
 DAVID R. BENNETT  
 STATE OF TEXAS  
 NO. 121182  
 07/14/2025



07/14/2025

date	issues & revisions	dsgr	aprv
10/09/2025	SHOWER DRAIN		

description  
**1ST LEVEL FLOOR PLAN**

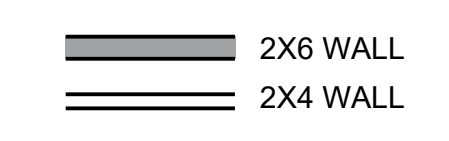
number  
**A2.0**

Copyright © 2024

**KEYED NOTES**

- 1 PROVIDE GAS
- 2 HOSE BIBB WITH ANTI SIPHON
- 3 NOTE: PROVIDE 2X6 BLOCKING @ 34" AFF AROUND PERIMETER OF THIS RESTROOM EXCEPT BEHIND THE SINK
- 4 PROVIDE POT FILLER
- 5 PROVIDE GLASS WALL WITH 30" SHOWER DOOR
- 6 MAXIMUM 1/2" CHANGE IN LEVEL

**WALL LEGEND**



**WINDOW SCHEDULE**

TAG	QTY	WIDTH	HEIGHT	TYPE
A	1	6/0	9/6	6/0 X 2/6 FIXED ARCH ON (2) 3/0 X 6/0 CASEMENT + MULLED
B	1	6/6	6/0	2/0 X 6/0 FIXED, 2/6 X 6/0 CSMT, 2/0 X 6/0 FIXED + MULLED
C	2	6/0	6/0	(2) 3/0 X 6/0 CASEMENT + MULLED
D	3	2/6	7/0	2/6 X 2/0 FIXED ON 2/6 X 5/0 CASEMENT + MULLED
E	3	2/6	7/0	FIXED
F	1	3/0	6/0	CASEMENT
G	1	5/0	3/0	FIXED
H	2	2/6	4/0	FIXED
I	4	4/0	2/0	FIXED

NOTE: ALL WINDOW ARE WITH GRIDS

**DOOR SCHEDULE @ 1ST FLOOR**

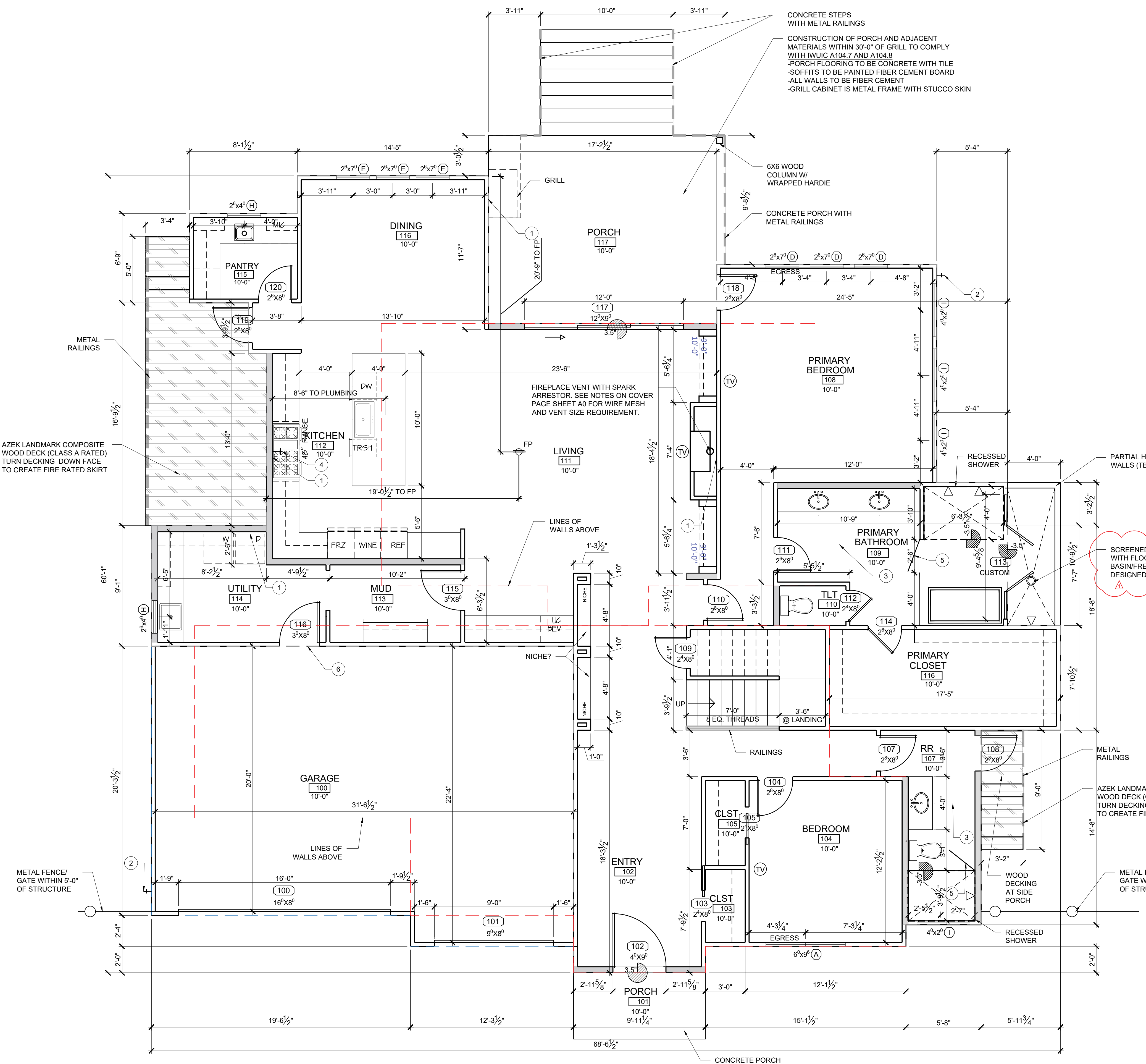
DR NO.	WIDTH	HEIGHT	SWING	ROOM DESCRIPTION
100	16/0	8/0	GR	OVERHEAD DOOR
101	9/0	8/0	GR	OVERHEAD DOOR
102	4/0	9/0	LH	ENTRY
103	2/4	8/0	PCKT	CLOSET
104	2/8	8/0	RH	BEDROOM
105	2/4	8/0	PCKT	CLOSET
106				NOT USED
107	2/8	8/0	LH	RESTROOM
108	2/8	8/0	LH	RESTROOM FROM SIDEYARD
109	2/4	8/0	RH	CLOSET UNDER STAIR
110	2/8	8/0	RH	PRIMARY BEDROOM
111	2/6	8/0	RH	PRIMARY BATHROOM
112	2/4	8/0	RH	TOILET
113	2/8	8/0	LH	OUTDOOR SHOWER
114	2/6	8/0	RH	PRIMARY CLOSET
115	3/0	8/0	RH	MUD
116	3/0	8/0	RH	UTILITY FROM GARAGE
117	12/0	9/0	SLDRS	REAR PORCH
118	2/8	8/0	LH	REAR PORCH FROM PRIMARY BEDROOM
119	2/8	8/0	RH	SIDE PORCH
120	2/6	8/0	RH	PANTRY

**DOOR SCHEDULE AT 2ND FLOOR**

200	5/0	8/0	DBL	ATTIC
201	2/6	8/0	LH	RESTROOM
202	2/8	8/0	RH	BEDROOM
203	2/4	8/0	RH	CLOSET
204	2/8	8/0	RH	BEDROOM
205	2/4	8/0	LH	CLOSET
206	2/6	8/0	RH	CLOSET
207	2/4	8/0	RH	CLOSET
208	2/8	8/0	RH	BEDROOM
209	2/6	8/0	LH	RESTROOM
210	2/4	8/0	RH	CLOSET
211	4/0	9/0	DBL	JULIET BALCONY

**WUI NOTES**

THIS PROJECT WILL MEET THE REQUIREMENTS OF THE 2024 INTERNATIONAL WILDLAND-URBAN INTERFACE CODE AND WILL BE CONSTRUCTED TO THE WUI PROXIMITY ZONE C IGNITION-RESISTANT REQUIREMENTS OF THE CODE. PLEASE SEE NOTES ON SHEET W1.0 FOR CONSTRUCTION REQUIREMENTS AND MATERIAL TO BE USED.



**1ST LEVEL FLOOR PLAN**  
SCALE: 1/4" = 1'-0"